



**ELECTRONIC COPY**

## LABORATORY GROWN DIAMOND REPORT

January 7, 2026	
IGI Report Number	LG762575733
Description	LABORATORY GROWN DIAMOND
Shape and Cutting Style	CUT CORNERED RECTANGULAR MODIFIED BRILLIANT
Measurements	10.01 X 7.11 X 4.72 MM

## GRADING RESULTS

Carat Weight	2.94 CARATS
Color Grade	E
Clarity Grade	VS 1

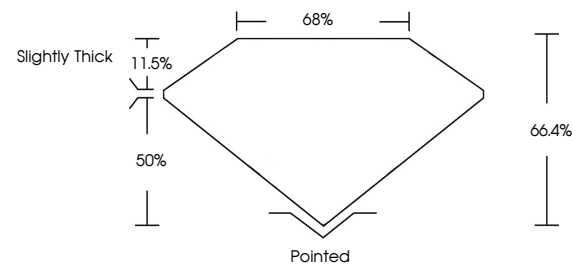
### ADDITIONAL GRADING INFORMATION

Polish	EXCELLENT
Symmetry	EXCELLENT
Fluorescence	NONE
Inscription(s)	 LG762575733

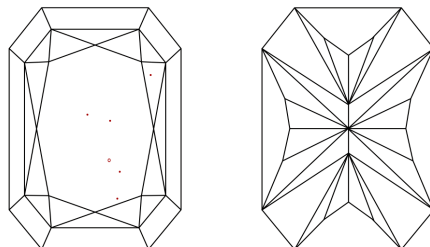
Comments: This Laboratory Grown Diamond was created by Chemical Vapor Deposition (CVD) growth process.  
Type IIa

LG762575733  
Report verification at [igi.org](https://igi.org)

## PROPORTIONS

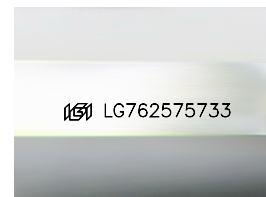


## CLARITY CHARACTERISTICS



## KEY TO SYMBOLS

Red symbols indicate internal characteristics.  
Green symbols indicate external characteristics.



Sample Image Used

**COLOR**

D E F G H I J Faint Very Light Light

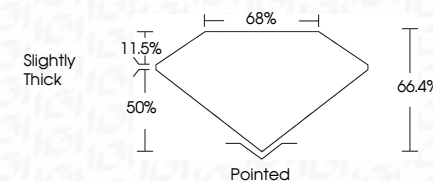
## CLARITY

FL	IF	VVS <sup>1-2</sup>	VS <sup>1-2</sup>	SI <sup>1-2</sup>	I <sup>1-3</sup>
Flawless	Internally Flawless	Very Very Slightly Included	Very Slightly Included	Slightly Included	Included

## LABORATORY GROWN DIAMOND REPORT



January 7, 2026	
IGI Report Number	LG76257533
Description	LABORATORY GROWN DIAMOND
Shape and Cutting Style	CUT CORNERED RECTANGULAR MODIFIED BRILLIANT
Measurements	10.01 X 7.11 X 4.72 MM
GRADING RESULTS	
Carat Weight	2.94 CARATS
Color Grade	E
Clarity Grade	VS 1



### ADDITIONAL GRADING INFORMATION

Polish	EXCELLENT
Symmetry	EXCELLENT
Fluorescence	NONE
Inscription(s)	 LG762575733
<p>Comments: This Laboratory Grown Diamond was created by Chemical Vapor Deposition (CVD) growth process.</p> <p>Type IIa</p>	



© IGI 2020, International Gemological Institute

FD - 10 20

**www.igi.org**

THIS DOCUMENT WAS PRODUCED WITH THE FOLLOWING SECURITY MEASURES: SPECIAL DOCUMENT PAPER, INK SCREENS, WATERMARK, BACKGROUND DESIGNS, HOLOGRAM AND OTHER SECURITY FEATURES NOT LISTED AND DO EXCEED DOCUMENT SECURITY INDUSTRY GUIDELINE

[illegible]