

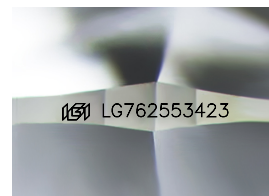
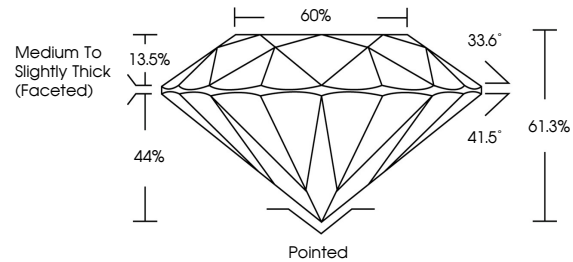


**INTERNATIONAL
GEMOLOGICAL
INSTITUTE**

ELECTRONIC COPY

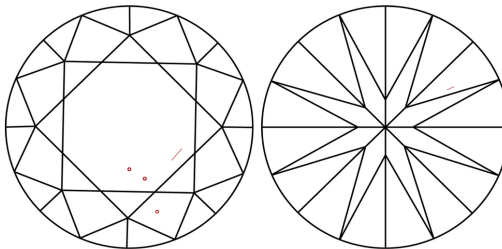
LG762553423
Report verification at igi.org

PROPORTIONS



Sample Image Used

CLARITY CHARACTERISTICS



KEY TO SYMBOLS

Red symbols indicate internal characteristics.
Green symbols indicate external characteristics.

COLOR

D E F G H I J Faint Very Light Light

CLARITY

FL IF WS¹⁻² VS¹⁻² SI¹⁻² I¹⁻³

Flawless	Internally Flawless	Very Very Slightly Included	Very Slightly Included	Slightly Included	Included
----------	---------------------	-----------------------------	------------------------	-------------------	----------

LABORATORY GROWN DIAMOND REPORT



January 2, 2026

IGI Report Number **LG762553423**

Description	LABORATORY GROWN DIAMOND
-------------	--------------------------

Shape and Cutting Style **ROUND BRILLIANT**

Measurements 8.17 - 8.20 X 5.02 MM

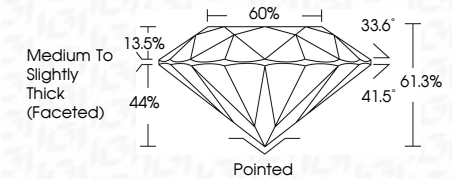
GRADING RESULTS

Carat Weight **2.07 CARATS**

Color Grade D

Clarity Grade VS 2

Cut Grade	IDEAL
-----------	-------



ADDITIONAL GRADING INFORMATION

Polish **EXCELLENT**Symmetry **EXCELLENT**Fluorescence **NONE**Inscription(s)  LG762553423

Comments: This Laboratory Grown Diamond was created by Chemical Vapor Deposition (CVD) growth process.
Type IIa



IGI



© IGI 2020, International Gemological Institute

FD - 10 20

www.igi.org

THIS DOCUMENT WAS PRODUCED WITH THE FOLLOWING SECURITY MEASURES: SPECIAL DOCUMENT PAPER, INK SCREENS, WATERMARK, BACKGROUND DESIGNS, HOLOGRAM AND OTHER SECURITY FEATURES NOT LISTED AND DO EXCEED DOCUMENT SECURITY INDUSTRY GUIDELINES.

January 2, 2026
IGI Report No LG762553423
ROUND BRILLIANT

18.17 - 8.20 X 6.02 MM	
Carat Weight	2.07 CARATS
Color Grade	D
Clarity Grade	VS 2
Cut Grade	IDEAL
Depth	61.3%
Table	65%
Girdle	Medium to slightly Thick (faceted)
Culet	Pointed
Polar	EXCELLENT
Symmetry	EXCELLENT
Fluorescence	NONE
Inscription(s)	(#) 15762553423

Comments:
This Laboratory Grown Diamond was created by Chemical Vapor Deposition (CVD) growth process.
Type IIa