



ELECTRONIC COPY

LG762548483
Report verification at igi.org



January 2, 2026
IGI Report Number LG762548483
Description LABORATORY GROWN DIAMOND
Shape and Cutting Style CUT CORNERED RECTANGULAR MODIFIED BRILLIANT
Measurements 10.17 X 7.07 X 4.80 MM
GRADING RESULTS
Carat Weight 3.05 CARATS
Color Grade E
Clarity Grade VS 1

LABORATORY GROWN DIAMOND REPORT

January 2, 2026
IGI Report Number LG762548483
Description LABORATORY GROWN DIAMOND
Shape and Cutting Style CUT CORNERED RECTANGULAR MODIFIED BRILLIANT
Measurements 10.17 X 7.07 X 4.80 MM

GRADING RESULTS

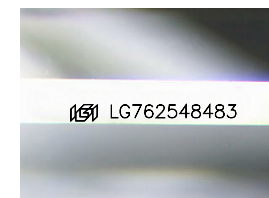
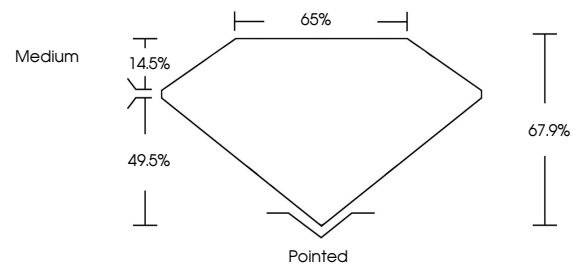
Carat Weight 3.05 CARATS
Color Grade E
Clarity Grade VS 1

ADDITIONAL GRADING INFORMATION

Polish EXCELLENT
Symmetry EXCELLENT
Fluorescence NONE
Inscription(s) LG762548483

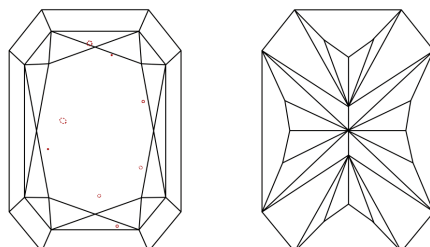
Comments: This Laboratory Grown Diamond was created by Chemical Vapor Deposition (CVD) growth process. Type IIa

PROPORTIONS



Sample Image Used

CLARITY CHARACTERISTICS



KEY TO SYMBOLS

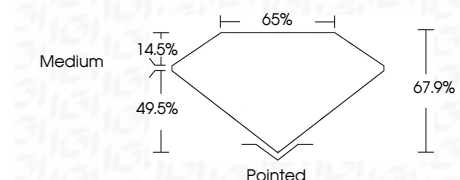
Red symbols indicate internal characteristics.
Green symbols indicate external characteristics.

COLOR

D E F G H I J Faint Very Light Light

CLARITY

FL IF VS 1-2 VS 2-3 SI 1-2 I 1-3
Flawless Internally Flawless Very Very Slightly Included Very Slightly Included Slightly Included Included



ADDITIONAL GRADING INFORMATION

Polish EXCELLENT
Symmetry EXCELLENT
Fluorescence NONE
Inscription(s) LG762548483
Comments: This Laboratory Grown Diamond was created by Chemical Vapor Deposition (CVD) growth process. Type IIa



January 2, 2026
IGI Report No LG762548483
CUT CORNERED RECT. MODIFIED BRILLIANT
10.17 X 7.07 X 4.80 MM
3.05 CARATS E
Color Grade E
Clarity Grade VS 1
Depth 49.5%
Table 14.5%
Girdle Medium
Culet Pointed
Polish EXCELLENT
Symmetry EXCELLENT
Fluorescence NONE
Inscription(s) LG762548483
Comments: This Laboratory Grown Diamond was created by Chemical Vapor Deposition (CVD) growth process. Type IIa