



**ELECTRONIC COPY**

LG762546943  
Report verification at igi.org



January 3, 2026  
IGI Report Number **LG762546943**  
Description **LABORATORY GROWN DIAMOND**  
Shape and Cutting Style **CUT CORNERED  
RECTANGULAR MODIFIED  
BRILLIANT**

Measurements **9.70 X 7.20 X 4.86 MM**

**GRADING RESULTS**

Carat Weight **2.94 CARATS**  
Color Grade **G**  
Clarity Grade **VS 1**

**LABORATORY GROWN DIAMOND REPORT**

January 3, 2026  
IGI Report Number **LG762546943**  
Description **LABORATORY GROWN DIAMOND**  
Shape and Cutting Style **CUT CORNERED RECTANGULAR  
MODIFIED BRILLIANT**  
Measurements **9.70 X 7.20 X 4.86 MM**

**GRADING RESULTS**

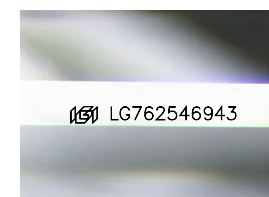
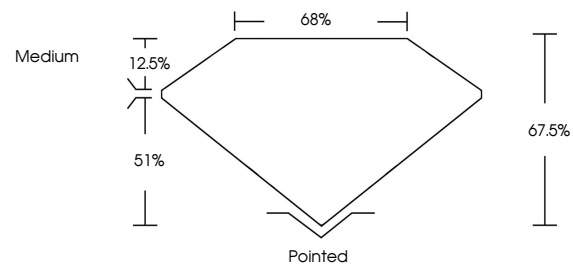
Carat Weight **2.94 CARATS**  
Color Grade **G**  
Clarity Grade **VS 1**

**ADDITIONAL GRADING INFORMATION**

Polish **EXCELLENT**  
Symmetry **EXCELLENT**  
Fluorescence **NONE**  
Inscription(s) **IGI LG762546943**

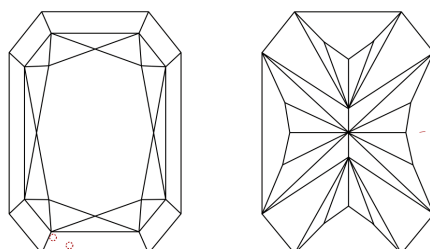
Comments: This Laboratory Grown Diamond was created by Chemical Vapor Deposition (CVD) growth process.  
Type IIa

**PROPORTIONS**



Sample Image Used

**CLARITY CHARACTERISTICS**



**KEY TO SYMBOLS**

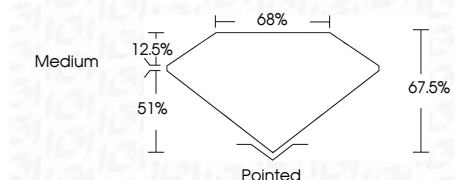
Red symbols indicate internal characteristics.  
Green symbols indicate external characteristics.

**COLOR**

D E F G H I J Faint Very Light Light

**CLARITY**

FL	IF	VS <sup>1-2</sup>	VS <sup>1-2</sup>	SI <sup>1-2</sup>	I <sup>1-3</sup>
Flawless	Internally Flawless	Very Very Slightly Included	Very Slightly Included	Slightly Included	Included



**ADDITIONAL GRADING INFORMATION**

Polish **EXCELLENT**  
Symmetry **EXCELLENT**  
Fluorescence **NONE**  
Inscription(s) **IGI LG762546943**  
Comments: This Laboratory Grown Diamond was created by Chemical Vapor Deposition (CVD) growth process.  
Type IIa



January 3, 2026  
IGI Report No **LG762546943**  
**CUT CORNERED RECT. MODIFIED BRILLIANT**  
**9.70 X 7.20 X 4.86 MM**  
Carat Weight **2.94 CARATS**  
Color Grade **G**  
Clarity Grade **VS 1**  
Depth **51.0%**  
Table **12.5%**  
Girdle **Medium**  
Culet **Pointed**  
Polish **EXCELLENT**  
Symmetry **EXCELLENT**  
Fluorescence **NONE**  
Inscription(s) **IGI LG762546943**  
Comments: This Laboratory Grown Diamond was created by Chemical Vapor Deposition (CVD) growth process.  
Type IIa