



ELECTRONIC COPY

LABORATORY GROWN DIAMOND REPORT

December 29, 2025  
IGI Report Number LG760563958  
Description LABORATORY GROWN DIAMOND  
Shape and Cutting Style CUT CORNERED RECTANGULAR MODIFIED BRILLIANT  
Measurements 10.16 X 7.24 X 4.78 MM

GRADING RESULTS

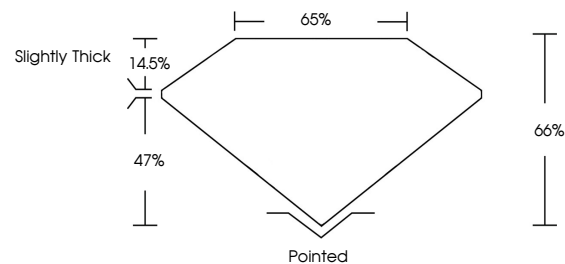
Carat Weight 3.08 CARATS  
Color Grade E  
Clarity Grade VS 1

ADDITIONAL GRADING INFORMATION

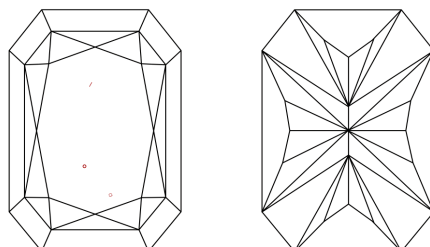
Polish EXCELLENT  
Symmetry EXCELLENT  
Fluorescence NONE  
Inscription(s) IGI LG760563958

Comments: This Laboratory Grown Diamond was created by Chemical Vapor Deposition (CVD) growth process.  
Type IIa

PROPORTIONS

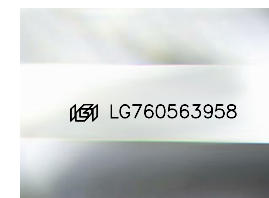


CLARITY CHARACTERISTICS



KEY TO SYMBOLS

Red symbols indicate internal characteristics.  
Green symbols indicate external characteristics.



Sample Image Used

COLOR

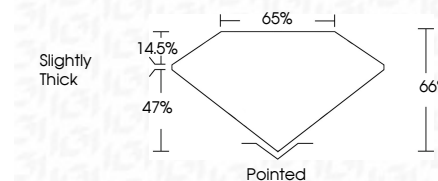
D E F G H I J Faint Very Light Light

CLARITY

FL IF VS<sup>1-2</sup> VS<sup>1-2</sup> SI<sup>1-2</sup> I<sup>1-3</sup>  
Flawless Internally Flawless Very Very Slightly Included Very Slightly Included Slightly Included Included



December 29, 2025  
IGI Report Number LG760563958  
Description LABORATORY GROWN DIAMOND  
Shape and Cutting Style CUT CORNERED RECTANGULAR MODIFIED BRILLIANT  
Measurements 10.16 X 7.24 X 4.78 MM  
GRADING RESULTS  
Carat Weight 3.08 CARATS  
Color Grade E  
Clarity Grade VS 1



ADDITIONAL GRADING INFORMATION

Polish EXCELLENT  
Symmetry EXCELLENT  
Fluorescence NONE  
Inscription(s) IGI LG760563958  
Comments: This Laboratory Grown Diamond was created by Chemical Vapor Deposition (CVD) growth process.  
Type IIa



IGI



December 29, 2025  
IGI Report No LG760563958  
CUT CORNERED RECT. MODIFIED BRILLIANT  
10.16 X 7.24 X 4.78 MM  
3.08 CARATS  
E  
VS 1  
66%  
65%  
Slightly Thick  
Pointed  
EXCELLENT  
EXCELLENT  
NONE  
IGI LG760563958  
Comments: This Laboratory Grown Diamond was created by Chemical Vapor Deposition (CVD) growth process.  
Type IIa