



ELECTRONIC COPY

LG760555421
Report verification at igi.org



December 29, 2025

IGI Report Number LG760555421

Description LABORATORY GROWN DIAMOND

Shape and Cutting Style CUT CORNERED RECTANGULAR MODIFIED BRILLIANT

Measurements 10.22 X 7.14 X 4.73 MM

GRADING RESULTS

Carat Weight 2.98 CARATS

Color Grade E

Clarity Grade VS 1

December 29, 2025

IGI Report Number LG760555421

Description LABORATORY GROWN DIAMOND

Shape and Cutting Style CUT CORNERED RECTANGULAR MODIFIED BRILLIANT

Measurements 10.22 X 7.14 X 4.73 MM

GRADING RESULTS

Carat Weight 2.98 CARATS

Color Grade E

Clarity Grade VS 1

ADDITIONAL GRADING INFORMATION

Polish EXCELLENT

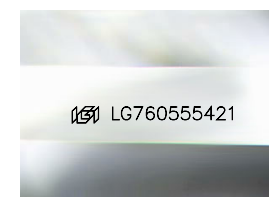
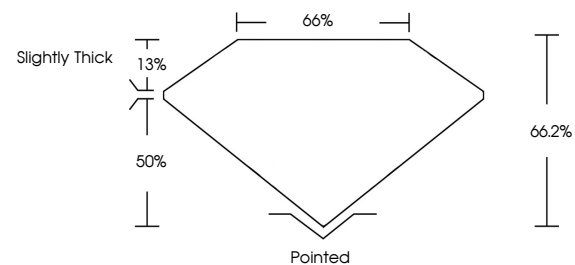
Symmetry EXCELLENT

Fluorescence NONE

Inscription(s) LG760555421

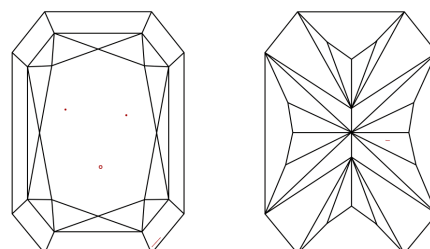
Comments: This Laboratory Grown Diamond was created by Chemical Vapor Deposition (CVD) growth process. Type IIa

PROPORTIONS



Sample Image Used

CLARITY CHARACTERISTICS



KEY TO SYMBOLS

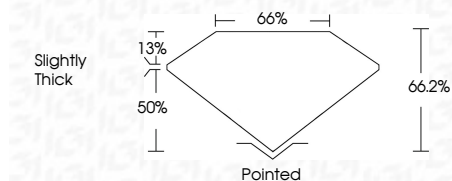
Red symbols indicate internal characteristics. Green symbols indicate external characteristics.

COLOR

D E F G H I J Faint Very Light Light

CLARITY

FL IF VS 1-2 VS 2-2 SI 1-2 I 1-3
Flawless Internally Flawless Very Very Slightly Included Very Slightly Included Slightly Included Included



ADDITIONAL GRADING INFORMATION

Polish EXCELLENT

Symmetry EXCELLENT

Fluorescence NONE

Inscription(s) LG760555421

Comments: This Laboratory Grown Diamond was created by Chemical Vapor Deposition (CVD) growth process. Type IIa



December 29, 2025
IGI Report No LG760555421
CUT CORNERED RECT. MODIFIED BRILLIANT
10.22 X 7.14 X 4.73 MM
2.98 CARATS
E
VS 1
66.2%
65%
Slightly Thick
Pointed
EXCELLENT
EXCELLENT
NONE
LG760555421
Comments: This Laboratory Grown Diamond was created by Chemical Vapor Deposition (CVD) growth process. Type IIa