

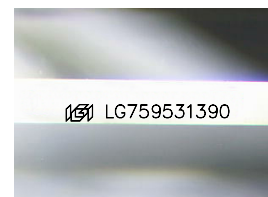
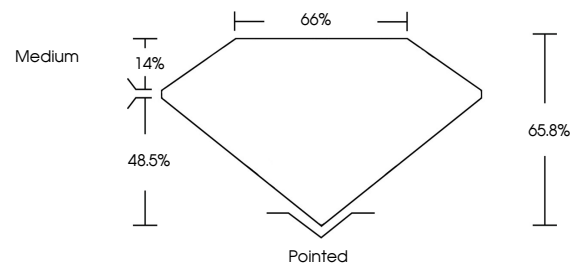


ELECTRONIC COPY

LABORATORY GROWN DIAMOND REPORT

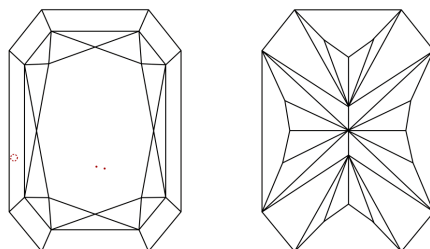
LG759531390
Report verification at igi.org

PROPORTIONS



Sample Image Used

CLARITY CHARACTERISTICS



KEY TO SYMBOLS

Red symbols indicate internal characteristics.
Green symbols indicate external characteristics.

COLOR

D E F G H I J Faint Very Light Light

CLARITY

FL	IF	VVS ¹⁻²	VS ¹⁻²	SI ¹⁻²	I ¹⁻³
Flawless	Internally Flawless	Very Very Slightly Included	Very Slightly Included	Slightly Included	Included

LABORATORY GROWN DIAMOND REPORT



December 25, 2025

IGI Report Number **LG759531390**Description **LABORATORY GROWN DIAMOND**

Shape and Cutting Style

CUT CORNERED
RECTANGULAR MODIFIED
BRILLIANT

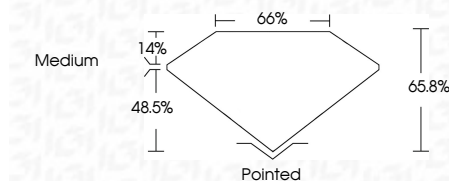
Measurements **9.92 X 7.33 X 4.82 MM**

GRADING RESULTS

Carat Weight **3.02 CARATS**

Color Grade E

Clarity Grade VS 2



ADDITIONAL GRADING INFORMATION

Polish **EXCELLENT**Symmetry **EXCELLENT**Fluorescence **NONE**Inscription(s) LG759531390

Comments: This Laboratory Grown Diamond was created by Chemical Vapor Deposition (CVD) growth process.
Type IIa



© IGI 2020, International Gemological Institute

FD - 10 20

www.igi.org

THIS DOCUMENT WAS PRODUCED WITH THE FOLLOWING SECURITY MEASURES: SPECIAL DOCUMENT PAPER, INK SCREENS, WATERMARK, BACKGROUND DESIGNS, HOLOGRAM AND OTHER SECURITY FEATURES NOT LISTED AND DO EXCEED DOCUMENT SECURITY INDUSTRY GUIDELINE

December 25, 2025	3.02 CARATS	E	VS 2	Ported	NONE	681 LG75931390
GI Report No. LG75931390	Carat Weight	Color Grade	Clarity Grade	Polish	Fluorescence	
3/1 CUT CORNERED RECT. MODIFIED BRILLIANT			Depth	Symmetry	Inscriptions(s)	
92 X 7.33 X 4.82 MM			Table	Grade		
			Gable			
			Medium			

Comments: Laboratory Grown Diamond was created by Chemical Vapor Deposition (CVD) growth process.
Type IIa