



ELECTRONIC COPY

LG759531023
Report verification at igi.org

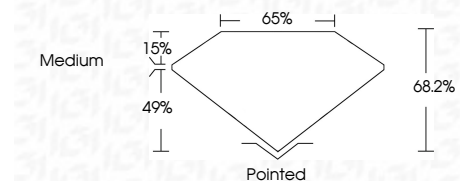


December 24, 2025
IGI Report Number LG759531023
Description LABORATORY GROWN DIAMOND
Shape and Cutting Style CUT CORNERED RECTANGULAR MODIFIED BRILLIANT

Measurements 10.00 X 7.04 X 4.80 MM

GRADING RESULTS

Carat Weight 2.98 CARATS
Color Grade E
Clarity Grade VVS 2

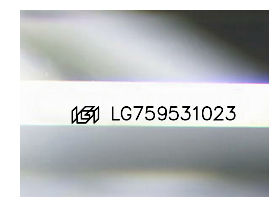


ADDITIONAL GRADING INFORMATION

Polish EXCELLENT
Symmetry EXCELLENT
Fluorescence NONE
Inscription(s) IGI LG759531023
Comments: This Laboratory Grown Diamond was created by Chemical Vapor Deposition (CVD) growth process. Type IIa

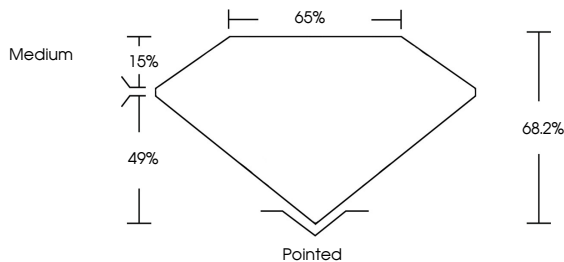


December 24, 2025
IGI Report No LG759531023
CUT CORNERED RECT. MODIFIED BRILLIANT
10.00 X 7.04 X 4.80 MM
2.98 CARATS
E
VVS 2
68.2%
65%
Medium
Pointed
EXCELLENT
EXCELLENT
NONE
IGI LG759531023
Comments: This Laboratory Grown Diamond was created by Chemical Vapor Deposition (CVD) growth process. Type IIa

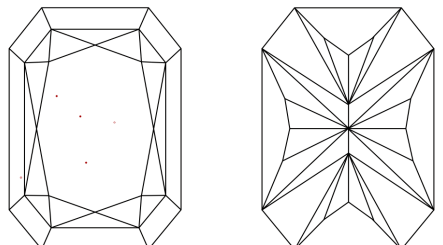


Sample Image Used

PROPORTIONS



CLARITY CHARACTERISTICS



KEY TO SYMBOLS

Red symbols indicate internal characteristics.
Green symbols indicate external characteristics.

COLOR

D E F G H I J Faint Very Light Light

CLARITY

FL IF VVS 1-2 VS 1-2 SI 1-2 I 1-3
Flawless Internally Flawless Very Very Slightly Included Very Slightly Included Slightly Included Included

