



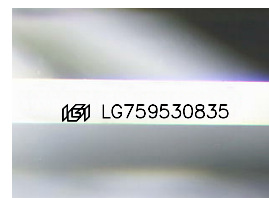
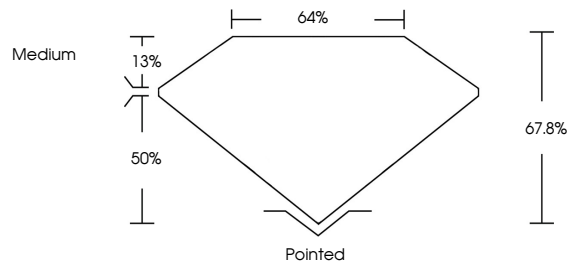
**INTERNATIONAL
GEMOLOGICAL
INSTITUTE**

ELECTRONIC COPY

LABORATORY GROWN DIAMOND REPORT

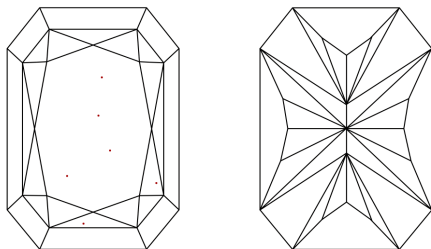
LG759530835
Report verification at igi.org

PROPORTIONS



Sample Image Used

CLARITY CHARACTERISTICS



KEY TO SYMBOLS

Red symbols indicate internal characteristics.
Green symbols indicate external characteristics.

COLOR

D E F G H I J Faint Very Light Light

CLARITY

FL IF WS¹⁻² VS¹⁻² SI¹⁻² I¹⁻³

Flawless	Internally Flawless	Very Very Slightly Included	Very Slightly Included	Slightly Included	Included
----------	---------------------	-----------------------------	------------------------	-------------------	----------



© IGI 2020, International Gemological Institute

FD - 10 20



THIS DOCUMENT WAS PRODUCED WITH THE FOLLOWING SECURITY MEASURES: SPECIAL DOCUMENT PAPER, INK SCREENS, WATERMARK BACKGROUND DESIGNS, HOLOGRAM AND OTHER SECURITY FEATURES NOT LISTED AND DO EXCEED DOCUMENT SECURITY INDUSTRY GUIDELINES.

LABORATORY GROWN DIAMOND REPORT



December 25, 2025

IGI Report Number **LG759530835**

Description	LABORATORY GROWN DIAMOND
-------------	--------------------------

Shape and Cutting Style

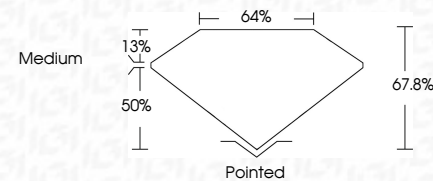
CUT CORNERED
RECTANGULAR MODIFIED
BRILLIANT

Measurements 10.02 X 7.17 X 4.86 MM

GRADING RESULTS

Carat Weight **3.02 CARATS**

Color Grade	F
-------------	---

Clarity Grade VVS 2

ADDITIONAL GRADING INFORMATION

Polish **EXCELLENT**Symmetry **EXCELLENT**Fluorescence **NONE**Inscription(s)  LG75953083

Comments: This Laboratory Grown Diamond was created by Chemical Vapor Deposition (CVD) growth process.
Type IIa



IG

December 25, 2025	10.02 X 7.17 X 4.84 MM	3.02 CARATS	VVS 2	Polished	GRI Report No LG759530385 CUT CORNERED RECT. MODIFIED BRILLIANT 10.02 X 7.17 X 4.84 MM Color Grade Clarity Grade Depth Table Girdle Culet Polish Symmetry Fluorescence Inscription(s) 681 LG759530385
IGI Certified	Carat Weight	F 2	EXCELLENT	EXCELLENT	
Color	Color Grade	67.8%	EXCELLENT	NONE	
Clarity	Clarity Grade	64%	Medium		
Measurements	Depth				

Comments:
 The Laboratory Grown Diamond was
 created by Chemical Vapor Deposition
 (CVD) growth process.
 Type IIa