



ELECTRONIC COPY

LG759520482
Report verification at igi.org



December 23, 2025
IGI Report Number LG759520482
Description LABORATORY GROWN DIAMOND
Shape and Cutting Style ROUND BRILLIANT
Measurements 7.95 - 8.00 X 5.02 MM
GRADING RESULTS
Carat Weight 2.00 CARATS
Color Grade E
Clarity Grade VS 1
Cut Grade EXCELLENT

December 23, 2025
IGI Report Number LG759520482
Description LABORATORY GROWN DIAMOND
Shape and Cutting Style ROUND BRILLIANT
Measurements 7.95 - 8.00 X 5.02 MM

GRADING RESULTS

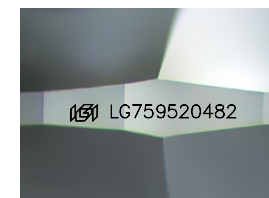
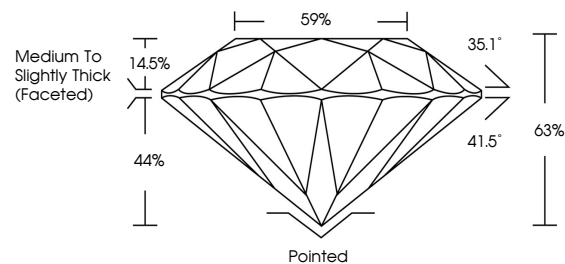
Carat Weight 2.00 CARATS
Color Grade E
Clarity Grade VS 1
Cut Grade EXCELLENT

ADDITIONAL GRADING INFORMATION

Polish EXCELLENT
Symmetry EXCELLENT
Fluorescence NONE
Inscription(s) IGI LG759520482

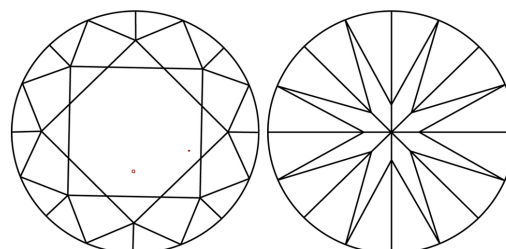
Comments: This Laboratory Grown Diamond was created by Chemical Vapor Deposition (CVD) growth process. Type IIa

PROPORTIONS



Sample Image Used

CLARITY CHARACTERISTICS



KEY TO SYMBOLS

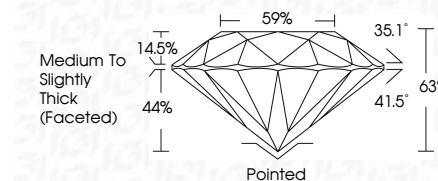
Red symbols indicate internal characteristics.
Green symbols indicate external characteristics.

COLOR

D E F G H I J Faint Very Light Light

CLARITY

Table with columns: FL, IF, VS 1-2, VS 1-2, SI 1-2, I 1-3 and corresponding descriptions: Flawless, Internally Flawless, Very Very Slightly Included, Very Slightly Included, Slightly Included, Included



ADDITIONAL GRADING INFORMATION

Polish EXCELLENT
Symmetry EXCELLENT
Fluorescence NONE
Inscription(s) IGI LG759520482
Comments: This Laboratory Grown Diamond was created by Chemical Vapor Deposition (CVD) growth process. Type IIa



December 23, 2025
IGI Report No LG759520482
ROUND BRILLIANT
7.95 - 8.00 X 5.02 MM
2.00 CARATS E
Color Grade EXCELLENT
Clarity Grade VS 1
Depth 65%
Table 69%
Girdle Medium To Slightly Thick (Faceted)
Culet Pointed
Polish EXCELLENT
Symmetry EXCELLENT
Fluorescence NONE
Inscription(s) IGI LG759520482
Comments: This Laboratory Grown Diamond was created by Chemical Vapor Deposition (CVD) growth process. Type IIa