



ELECTRONIC COPY

LG758547402
Report verification at igi.org



December 19, 2025

IGI Report Number LG758547402

Description LABORATORY GROWN DIAMOND

Shape and Cutting Style ROUND BRILLIANT

Measurements 8.03 - 8.07 X 5.06 MM

GRADING RESULTS

Carat Weight 2.02 CARATS

Color Grade E

Clarity Grade VS 1

Cut Grade EXCELLENT

December 19, 2025

IGI Report Number LG758547402

Description LABORATORY GROWN DIAMOND

Shape and Cutting Style ROUND BRILLIANT

Measurements 8.03 - 8.07 X 5.06 MM

GRADING RESULTS

Carat Weight 2.02 CARATS

Color Grade E

Clarity Grade VS 1

Cut Grade EXCELLENT

ADDITIONAL GRADING INFORMATION

Polish EXCELLENT

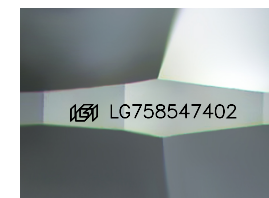
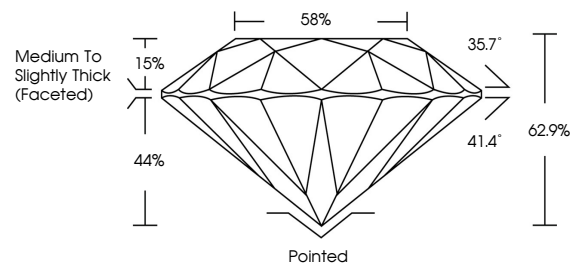
Symmetry EXCELLENT

Fluorescence NONE

Inscription(s) IGI LG758547402

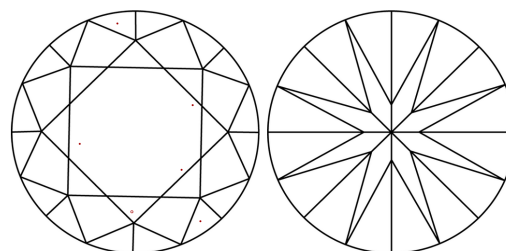
Comments: This Laboratory Grown Diamond was created by Chemical Vapor Deposition (CVD) growth process. Type IIa

PROPORTIONS



Sample Image Used

CLARITY CHARACTERISTICS



KEY TO SYMBOLS

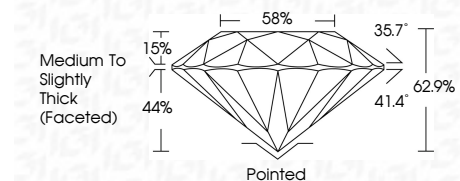
Red symbols indicate internal characteristics. Green symbols indicate external characteristics.

COLOR

D E F G H I J Faint Very Light Light

CLARITY

Table with columns: FL, IF, VS 1-2, VS 1-2, SI 1-2, I 1-3. Row: Flawless, Internally Flawless, Very Very Slightly Included, Very Slightly Included, Slightly Included, Included



ADDITIONAL GRADING INFORMATION

Polish EXCELLENT

Symmetry EXCELLENT

Fluorescence NONE

Inscription(s) IGI LG758547402

Comments: This Laboratory Grown Diamond was created by Chemical Vapor Deposition (CVD) growth process. Type IIa



Summary table of report details: December 19, 2025, IGI Report No LG758547402, ROUND BRILLIANT, 8.03 - 8.07 X 5.06 MM, 2.02 CARATS, E, VS 1, EXCELLENT, 62.9%, 58%, Medium To Slightly Thick (Faceted), Pointed, EXCELLENT, EXCELLENT, NONE, IGI LG758547402

Comments: This Laboratory Grown Diamond was created by Chemical Vapor Deposition (CVD) growth process. Type IIa