



ELECTRONIC COPY

LG756585791
Report verification at igi.org



December 16, 2025

IGI Report Number **LG756585791**

Description **LABORATORY GROWN DIAMOND**

Shape and Cutting Style **ROUND BRILLIANT**

Measurements **8.05 - 8.12 X 5.06 MM**

GRADING RESULTS

Carat Weight **2.03 CARATS**

Color Grade **E**

Clarity Grade **VVS 2**

Cut Grade **IDEAL**

December 16, 2025

IGI Report Number **LG756585791**

Description **LABORATORY GROWN DIAMOND**

Shape and Cutting Style **ROUND BRILLIANT**

Measurements **8.05 - 8.12 X 5.06 MM**

GRADING RESULTS

Carat Weight **2.03 CARATS**

Color Grade **E**

Clarity Grade **VVS 2**

Cut Grade **IDEAL**

ADDITIONAL GRADING INFORMATION

Polish **EXCELLENT**

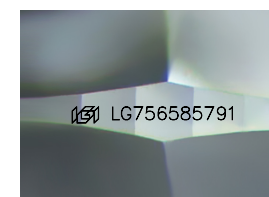
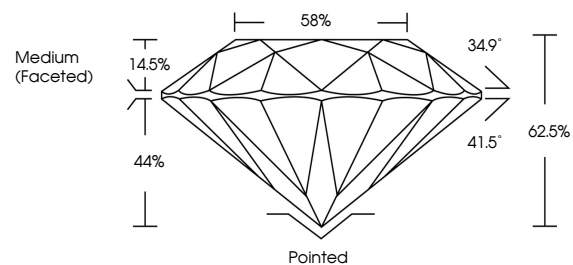
Symmetry **EXCELLENT**

Fluorescence **NONE**

Inscription(s) **IGI LG756585791**

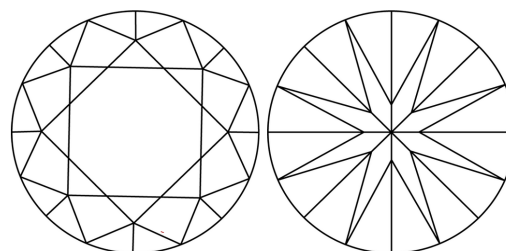
Comments: This Laboratory Grown Diamond was created by Chemical Vapor Deposition (CVD) growth process. Type IIa

PROPORTIONS



Sample Image Used

CLARITY CHARACTERISTICS



KEY TO SYMBOLS

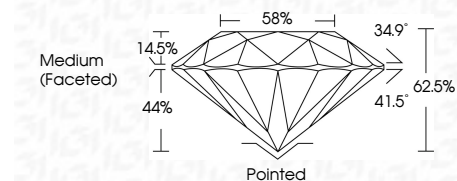
Red symbols indicate internal characteristics.
Green symbols indicate external characteristics.

COLOR

D E F G H I J Faint Very Light Light

CLARITY

FL	IF	VVS ¹⁻²	VS ¹⁻²	SI ¹⁻²	I ¹⁻³
Flawless	Internally Flawless	Very Very Slightly Included	Very Slightly Included	Slightly Included	Included



ADDITIONAL GRADING INFORMATION

Polish **EXCELLENT**

Symmetry **EXCELLENT**

Fluorescence **NONE**

Inscription(s) **IGI LG756585791**

Comments: This Laboratory Grown Diamond was created by Chemical Vapor Deposition (CVD) growth process. Type IIa



IGI



December 16, 2025	IGI Report No LG756585791	2.03 CARATS	E	Pointed	EXCELLENT	EXCELLENT	NONE	IGI LG756585791
ROUND BRILLIANT	8.05 - 8.12 X 5.06 MM	Color Grade	VVS 2	Depth	IDEAL	62.5%	58%	Medium (Faceted)
		Clarity Grade	VVS 2	Cut Grade	IDEAL			
		Polish	EXCELLENT	Symmetry	EXCELLENT	Fluorescence	NONE	
		Inscription(s)						

Comments: This Laboratory Grown Diamond was created by Chemical Vapor Deposition (CVD) growth process. Type IIa