



**ELECTRONIC COPY**

## LABORATORY GROWN DIAMOND REPORT

|                         |                                      |
|-------------------------|--------------------------------------|
| November 28, 2025       |                                      |
| IGI Report Number       | LG752550738                          |
| Description             | LABORATORY GROWN DIAMOND             |
| Shape and Cutting Style | SQUARE CUSHION MODIFIED<br>BRILLIANT |
| Measurements            | 6.03 X 5.92 X 4.00 MM                |

## GRADING RESULTS

|               |            |
|---------------|------------|
| Carat Weight  | 1.09 CARAT |
| Color Grade   | F          |
| Clarity Grade | VVS 2      |

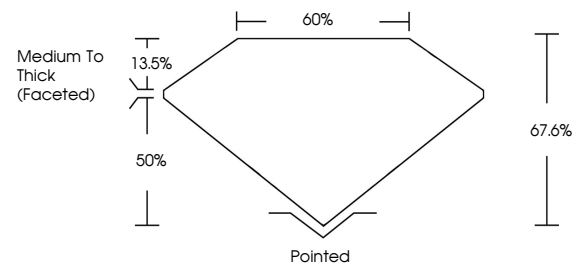
### ADDITIONAL GRADING INFORMATION

|                |   |
|----------------|---|
| Polish         | EXCELLENT   |
| Symmetry       | EXCELLENT   |
| Fluorescence   | NONE  |
| Inscription(s) |  LG752550738 |

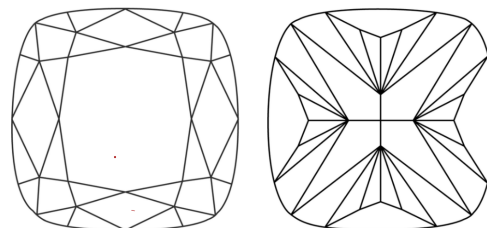
Comments: This Laboratory Grown Diamond was created by Chemical Vapor Deposition (CVD) growth process.  
Type IIa

LG752550738  
Report verification at [igi.org](https://igi.org)

## PROPORTIONS

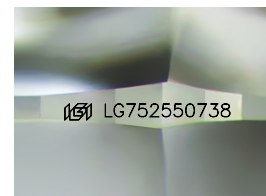


## CLARITY CHARACTERISTICS



### KEY TO SYMBOLS

Red symbols indicate internal characteristics.  
Green symbols indicate external characteristics.



Sample Image Used

## COLOR

D E F G H I J Faint Very Light Light

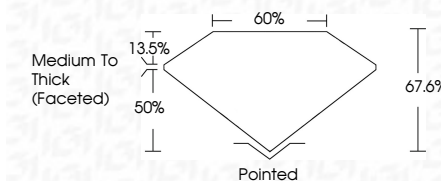
## CLARITY

| FL       | IF                  | VVS <sup>1-2</sup>          | VS <sup>1-2</sup>      | SI <sup>1-2</sup> | I <sup>1-3</sup> |
|----------|---------------------|-----------------------------|------------------------|-------------------|------------------|
| Flawless | Internally Flawless | Very Very Slightly Included | Very Slightly Included | Slightly Included | Included         |

## LABORATORY GROWN DIAMOND REPORT



|                         |                                      |
|-------------------------|--------------------------------------|
| November 28, 2025       |                                      |
| IGI Report Number       | LG752550738                          |
| Description             | LABORATORY GROWN DIAMOND             |
| Shape and Cutting Style | SQUARE CUSHION MODIFIED<br>BRILLIANT |
| Measurements            | 6.03 X 5.92 X 4.00 MM                |
| GRADING RESULTS         |                                      |
| Carat Weight            | 1.00 CARAT                           |
| Color Grade             | F                                    |
| Clarity Grade           | VVS 2                                |



### ADDITIONAL GRADING INFORMATION

|   |   |
|---|---|
| Polish  | EXCELLENT   |
| Symmetry  | EXCELLENT   |
| Fluorescence  | NONE  |
| Inscription(s)  |  LG752550738 |
| <p>Comments: This Laboratory Grown Diamond was created by Chemical Vapor Deposition (CVD) growth process.</p> <p>Type IIa</p> |   |



© IGI 2020, International Gemological Institute

FD - 10 20

**www.igi.org**



THIS DOCUMENT WAS PRODUCED WITH THE FOLLOWING SECURITY MEASURES: SPECIAL DOCUMENT PAPER, INK SCREENS, WATERMARK, BACKGROUND DESIGNS, HOLOGRAM AND OTHER SECURITY FEATURES NOT LISTED AND DO EXCEED DOCUMENT SECURITY INDUSTRY GUIDELINE

|                           |                 |                                     |
|---------------------------|-----------------|-------------------------------------|
| November 28, 2025         | 1.09 CARAT      | F                                   |
| SI Report No. I6792550738 | VVS 2           | 57.6%                               |
| GL Report No. I6792550738 | 67.6%           | 50%                                 |
| GI Report No. I6792550738 | Medium to Thick | (Excellent)                         |
| GI Report No. I6792550738 | Polished        | EXCELLENT                           |
| GI Report No. I6792550738 | Polish          | EXCELLENT                           |
| GI Report No. I6792550738 | Symmetry        | EXCELLENT                           |
| GI Report No. I6792550738 | Fluorescence    | NONE                                |
| GI Report No. I6792550738 | Color           | Colorless                           |
| GI Report No. I6792550738 | Clarity         | Very, Very Slightly Included (VVS2) |
| GI Report No. I6792550738 | Depth           | Excellent                           |
| GI Report No. I6792550738 | Table           | Excellent                           |
| GI Report No. I6792550738 | Weight          | 1.09 Carat                          |
| GI Report No. I6792550738 | Color Grade     | F                                   |
| GI Report No. I6792550738 | Clarity Grade   | VVS 2                               |
| GI Report No. I6792550738 | Depth           | 67.6%                               |
| GI Report No. I6792550738 | Table           | 50%                                 |
| GI Report No. I6792550738 | Weight          | Medium to Thick (Excellent)         |
| GI Report No. I6792550738 | Color           | Polished                            |
| GI Report No. I6792550738 | Clarity         | Polish                              |
| GI Report No. I6792550738 | Depth           | Symmetry                            |
| GI Report No. I6792550738 | Table           | Fluorescence                        |
| GI Report No. I6792550738 | Weight          | Colorless                           |
| GI Report No. I6792550738 | Color Grade     | Very, Very Slightly Included (VVS2) |
| GI Report No. I6792550738 | Clarity Grade   | Excellent                           |
| GI Report No. I6792550738 | Depth           | Excellent                           |
| GI Report No. I6792550738 | Table           | Excellent                           |
| GI Report No. I6792550738 | Weight          | 1.09 Carat                          |

**Comments:**  
This Laboratory Grown Diamond was  
created by Chemical Vapor Deposition  
(CVD) growth process.