



**ELECTRONIC COPY**

## LABORATORY GROWN DIAMOND REPORT

November 18, 2025	
IGI Report Number	LG749589693
Description	LABORATORY GROWN DIAMOND
Shape and Cutting Style	CUT CORNERED RECTANGULAR MODIFIED BRILLIANT
Measurements	9.57 X 6.74 X 4.53 MM

## GRADING RESULTS

Carat Weight	2.54 CARATS
Color Grade	G
Clarity Grade	VVS 2

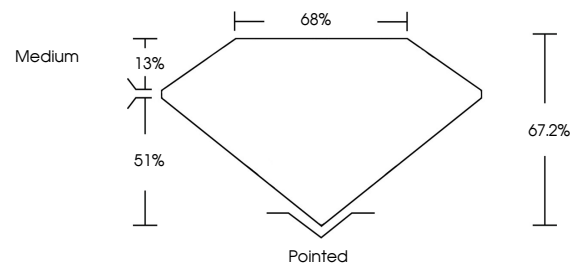
### ADDITIONAL GRADING INFORMATION

Polish	EXCELLENT
Symmetry	EXCELLENT
Fluorescence	NONE
Inscription(s)	 LG749589693

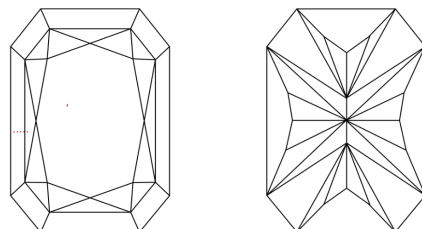
Comments: This Laboratory Grown Diamond was created by Chemical Vapor Deposition (CVD) growth process.  
Type IIa

LG749589693  
Report verification at [igi.org](https://igi.org)

## PROPORTIONS

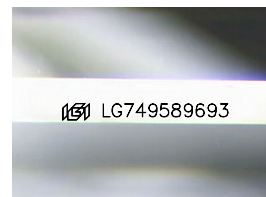


## CLARITY CHARACTERISTICS



## KEY TO SYMBOLS

Red symbols indicate internal characteristics.  
Green symbols indicate external characteristics.



Sample Image Used

**COLOR**

D E F G H I J Faint Very Light Light

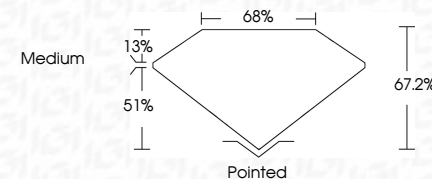
## CLARITY

FL	IF	VVS <sup>1-2</sup>	VS <sup>1-2</sup>	SI <sup>1-2</sup>	I <sup>1-3</sup>
Flawless	Internally Flawless	Very Very Slightly Included	Very Slightly Included	Slightly Included	Included

## LABORATORY GROWN DIAMOND REPORT



November 18, 2025	
IGI Report Number	LG749589693
Description	LABORATORY GROWN DIAMOND
Shape and Cutting Style	CUT CORNERED RECTANGULAR MODIFIED BRILLIANT
Measurements	9.57 X 6.74 X 4.53 MM
<b>GRADING RESULTS</b>	
Carat Weight	2.54 CARATS
Color Grade	G
Clarity Grade	VVS 2



### ADDITIONAL GRADING INFORMATION

Polish	EXCELLENT
Symmetry	EXCELLENT
Fluorescence	NONE
Inscription(s)	 LG749589693
<p>Comments: This Laboratory Grown Diamond was created by Chemical Vapor Deposition (CVD) growth process.</p> <p>Type IIa</p>	



© IGI 2020, International Gemological Institute

FD - 10 20

**www.igi.org**

THIS DOCUMENT WAS PRODUCED WITH THE FOLLOWING SECURITY MEASURES: SPECIAL DOCUMENT PAPER, INK SCREENS, WATERMARK, BACKGROUND DESIGNS, HOLOGRAM AND OTHER SECURITY FEATURES NOT LISTED AND DO EXCEED DOCUMENT SECURITY INDUSTRY GUIDELINE

November 18, 2025	GI Report No LG74699693	CU CORNERED RECT. MODIFIED BRILLIANT
25.54 CARATS	VVS 2	Polished
Color Grade	67.2%	EXCELLENT
Clarity Grade	68%	EXCELLENT
Depth	Medium	NONE
Table		681 LG74699693
Girdle		
Culet		
Polish		
Symmetry		
Fluorescence		
Inscriptions(s)		
Comments:		
		This Laboratory Grown Diamond was created by Chemical Vapor Deposition (CVD) growth process.
		Type IIa