



ELECTRONIC COPY

LABORATORY GROWN DIAMOND REPORT

November 18, 2025
IGI Report Number LG749565690
Description LABORATORY GROWN DIAMOND
Shape and Cutting Style EMERALD CUT
Measurements 9.88 X 6.94 X 4.68 MM

GRADING RESULTS

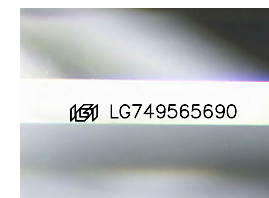
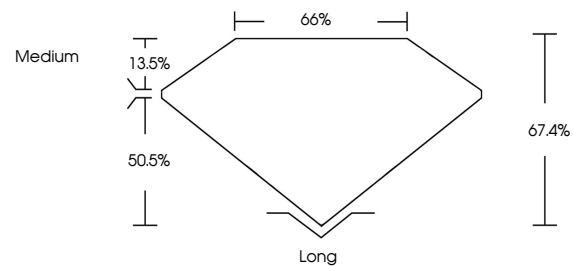
Carat Weight 3.10 CARATS
Color Grade H
Clarity Grade VS 1

ADDITIONAL GRADING INFORMATION

Polish EXCELLENT
Symmetry EXCELLENT
Fluorescence NONE
Inscription(s) IGI LG749565690

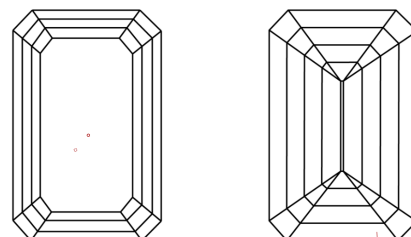
Comments: This Laboratory Grown Diamond was created by Chemical Vapor Deposition (CVD) growth process. Type IIa

PROPORTIONS



Sample Image Used

CLARITY CHARACTERISTICS



KEY TO SYMBOLS

Red symbols indicate internal characteristics.
Green symbols indicate external characteristics.

COLOR

D E F G H I J Faint Very Light Light

CLARITY

FL IF VS¹⁻² VS¹⁻² SI¹⁻² I¹⁻³
Flawless Internally Flawless Very Very Slightly Included Very Slightly Included Slightly Included Included



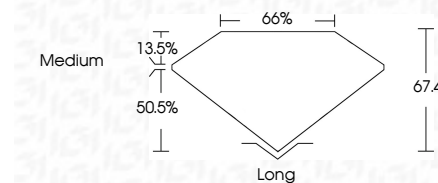
November 18, 2025
IGI Report Number LG749565690
Description LABORATORY GROWN DIAMOND
Shape and Cutting Style EMERALD CUT
Measurements 9.88 X 6.94 X 4.68 MM

GRADING RESULTS

Carat Weight 3.10 CARATS
Color Grade H
Clarity Grade VS 1

ADDITIONAL GRADING INFORMATION

Polish EXCELLENT
Symmetry EXCELLENT
Fluorescence NONE
Inscription(s) IGI LG749565690
Comments: This Laboratory Grown Diamond was created by Chemical Vapor Deposition (CVD) growth process. Type IIa



IGI



November 18, 2025
IGI Report No LG749565690
EMERALD CUT
3.10 CARATS H
9.88 X 6.94 X 4.68 MM
Carat Weight
Color Grade
Clarity Grade
Depth
Table
Girdle
Medium
Long
Culet
Polish
Symmetry
Fluorescence
Inscription(s)
EXCELLENT
EXCELLENT
NONE
IGI LG749565690
Comments: This Laboratory Grown Diamond was created by Chemical Vapor Deposition (CVD) growth process. Type IIa