



**ELECTRONIC COPY**

LG747520766  
Report verification at igi.org



November 6, 2025

IGI Report Number **LG747520766**

Description **LABORATORY GROWN DIAMOND**

Shape and Cutting Style **ROUND BRILLIANT**

Measurements **11.87 - 11.93 X 7.00 MM**

**GRADING RESULTS**

Carat Weight **5.97 CARATS**

Color Grade **E**

Clarity Grade **VVS 2**

Cut Grade **IDEAL**

November 6, 2025  
IGI Report Number **LG747520766**  
Description **LABORATORY GROWN DIAMOND**  
Shape and Cutting Style **ROUND BRILLIANT**  
Measurements **11.87 - 11.93 X 7.00 MM**

**GRADING RESULTS**

Carat Weight **5.97 CARATS**

Color Grade **E**

Clarity Grade **VVS 2**

Cut Grade **IDEAL**

**ADDITIONAL GRADING INFORMATION**

Polish **EXCELLENT**

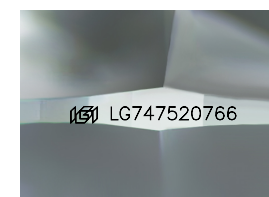
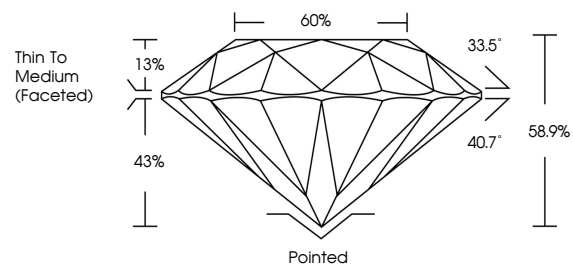
Symmetry **EXCELLENT**

Fluorescence **NONE**

Inscription(s) **IGI LG747520766**

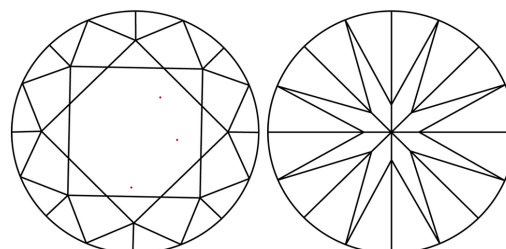
Comments: This Laboratory Grown Diamond was created by Chemical Vapor Deposition (CVD) growth process. Type IIa

**PROPORTIONS**



Sample Image Used

**CLARITY CHARACTERISTICS**



**KEY TO SYMBOLS**

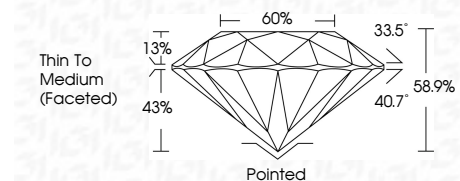
Red symbols indicate internal characteristics.  
Green symbols indicate external characteristics.

**COLOR**

D E F G H I J Faint Very Light Light

**CLARITY**

| FL       | IF                  | VVS <sup>1-2</sup>          | VS <sup>1-2</sup>      | SI <sup>1-2</sup> | I <sup>1-3</sup> |
|----------|---------------------|-----------------------------|------------------------|-------------------|------------------|
| Flawless | Internally Flawless | Very Very Slightly Included | Very Slightly Included | Slightly Included | Included         |



**ADDITIONAL GRADING INFORMATION**

Polish **EXCELLENT**

Symmetry **EXCELLENT**

Fluorescence **NONE**

Inscription(s) **IGI LG747520766**

Comments: This Laboratory Grown Diamond was created by Chemical Vapor Deposition (CVD) growth process. Type IIa



**IGI**



|                  |                           |                 |                         |                |   |       |       |       |     |                          |         |           |           |      |                 |
|------------------|---------------------------|-----------------|-------------------------|----------------|---|-------|-------|-------|-----|--------------------------|---------|-----------|-----------|------|-----------------|
| November 6, 2025 | IGI Report No LG747520766 | ROUND BRILLIANT | 11.87 - 11.93 X 7.00 MM | 5.97 CARATS    | E | VVS 2 | IDEAL | 58.9% | 60% | Thin To Medium (Faceted) | Pointed | EXCELLENT | EXCELLENT | NONE | IGI LG747520766 |
| Cut              | Polish                    | Symmetry        | Fluorescence            | Inscription(s) |   |       |       |       |     |                          |         |           |           |      |                 |

Comments: This Laboratory Grown Diamond was created by Chemical Vapor Deposition (CVD) growth process. Type IIa