



ELECTRONIC COPY

LABORATORY GROWN DIAMOND REPORT

October 10, 2025	
IGI Report Number	LG741547440
Description	LABORATORY GROWN DIAMOND
Shape and Cutting Style	ROUND BRILLIANT
Measurements	9.07 - 9.11 X 5.71 MM

GRADING RESULTS

Carat Weight	2.97 CARATS
Color Grade	D
Clarity Grade	VS 1
Cut Grade	EXCELLENT

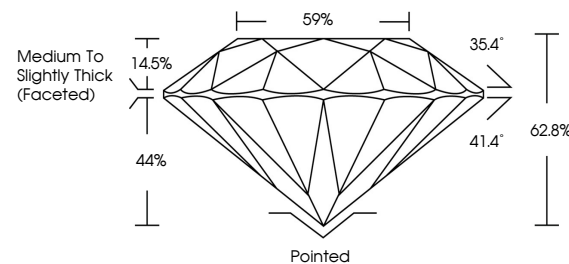
ADDITIONAL GRADING INFORMATION

Polish	EXCELLENT
Symmetry	EXCELLENT
Fluorescence	NONE
Inscription(s)	 LG741547440

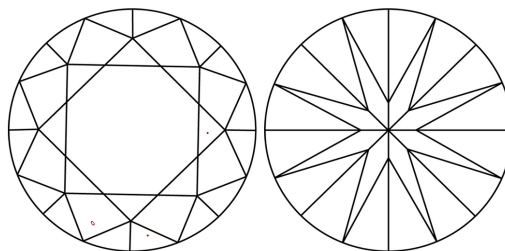
Comments: This Laboratory Grown Diamond was created by Chemical Vapor Deposition (CVD) growth process.
Type IIa

LG741547440
Report verification at igi.org

PROPORTIONS

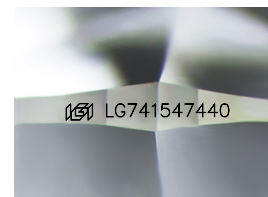


CLARITY CHARACTERISTICS



KEY TO SYMBOLS

Red symbols indicate internal characteristics.
Green symbols indicate external characteristics.



Sample Image Used

COLOR

D E F G H I J Faint Very Light Light

CLARITY

FL	IF	VVS ¹⁻²	VS ¹⁻²	SI ¹⁻²	I ¹⁻³
Flawless	Internally Flawless	Very Very Slightly Included	Very Slightly Included	Slightly Included	Included

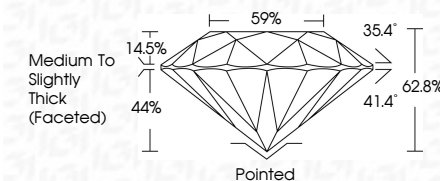
LABORATORY GROWN DIAMOND REPORT



October 10, 2025	
IGI Report Number	LG741547440
Description	LABORATORY GROWN DIAMOND
Shape and Cutting Style	ROUND BRILLIANT
Measurements	9.07 - 9.11 X 5.71 MM

GRADING RESULTS

Carat Weight	2.97 CARATS
Color Grade	D
Clarity Grade	VS 1
Cut Grade	EXCELLENT



ADDITIONAL GRADING INFORMATION

Polish	EXCELLENT
Symmetry	EXCELLENT
Fluorescence	NONE
Inscription(s)	 LG741547440
<p>Comments: This Laboratory Grown Diamond was created by Chemical Vapor Deposition (CVD) growth process.</p> <p>Type Ila</p>	



© IGI 2020, International Gemological Institute

FD - 10 20



THIS DOCUMENT WAS PRODUCED WITH THE FOLLOWING SECURITY MEASURES: SPECIAL DOCUMENT PAPER, INK SCREENS, WATERMARK, BACKGROUND DESIGNS, HOLOGRAM AND OTHER SECURITY FEATURES NOT LISTED AND DO EXCEED DOCUMENT SECURITY INDUSTRY GUIDELINES

www.igi.org

October 10, 2025	297 CARATS	D	VS 1	Excellent	62.8%	89%	Medium to Slightly Thick (Faceted)	Pointed	Excellent	None	1691 LG141547440
GI Report No. LG141547440											
ROUND BRILLIANT											
1.07 - 5.11 x 5.71 MM											
Color Weight	Color Grade	Clarity Grade	Depth	Cut Grade	Table	Girdle		Culet	Polish	Symmetry	Fluorescence
											Inscriptions(s)

Comments:
 1. This is a Natural, Colorless, Round, Brilliant Cut, 1.07 - 5.11 x 5.71 mm, 297 carat, VS1 clarity, Excellent cut, Medium to Slightly Thick (Faceted) diamond was created by Chemical Vapor Deposition (CVD) growth process.
 Type IIa