



**ELECTRONIC COPY**

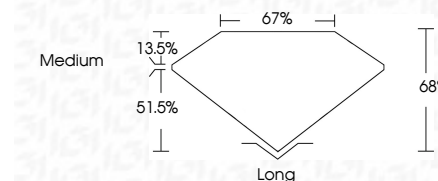
LG729519935  
Report verification at igi.org



August 20, 2025  
IGI Report Number **LG729519935**  
Description **LABORATORY GROWN DIAMOND**  
Shape and Cutting Style **EMERALD CUT**  
Measurements **8.23 X 6.09 X 4.14 MM**

**GRADING RESULTS**

Carat Weight **2.04 CARATS**  
Color Grade **H**  
Clarity Grade **VS 1**



**ADDITIONAL GRADING INFORMATION**

Polish **EXCELLENT**  
Symmetry **EXCELLENT**  
Fluorescence **NONE**  
Inscription(s) **IGI LG729519935**  
Comments: This Laboratory Grown Diamond was created by Chemical Vapor Deposition (CVD) growth process. Type IIa



August 20, 2025  
IGI Report No LG729519935  
**EMERALD CUT**  
8.23 X 6.09 X 4.14 MM  
2.04 CARATS  
H  
Color Grade  
VS 1  
Depth 68%  
Table 51.5%  
Girdle 13.5%  
Medium  
Long  
EXCELLENT  
EXCELLENT  
NONE  
IGI LG729519935  
Comments: This Laboratory Grown Diamond was created by Chemical Vapor Deposition (CVD) growth process. Type IIa

**LABORATORY GROWN DIAMOND REPORT**

August 20, 2025  
IGI Report Number **LG729519935**  
Description **LABORATORY GROWN DIAMOND**  
Shape and Cutting Style **EMERALD CUT**  
Measurements **8.23 X 6.09 X 4.14 MM**

**GRADING RESULTS**

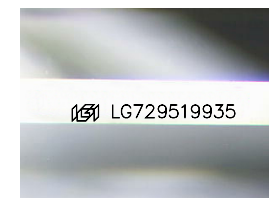
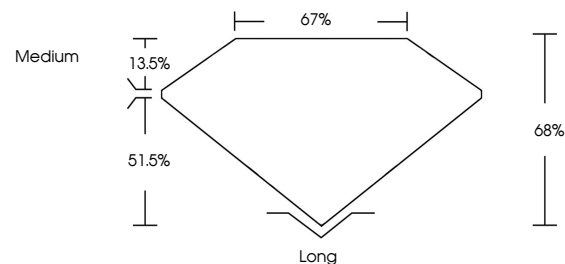
Carat Weight **2.04 CARATS**  
Color Grade **H**  
Clarity Grade **VS 1**

**ADDITIONAL GRADING INFORMATION**

Polish **EXCELLENT**  
Symmetry **EXCELLENT**  
Fluorescence **NONE**  
Inscription(s) **IGI LG729519935**

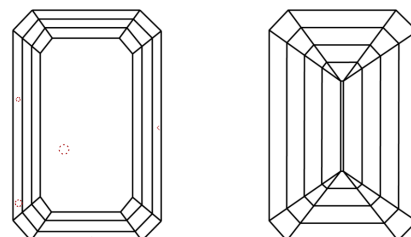
Comments: This Laboratory Grown Diamond was created by Chemical Vapor Deposition (CVD) growth process. Type IIa

**PROPORTIONS**



Sample Image Used

**CLARITY CHARACTERISTICS**



**KEY TO SYMBOLS**

Red symbols indicate internal characteristics.  
Green symbols indicate external characteristics.

**COLOR**

D E F G H I J Faint Very Light Light

**CLARITY**

IF	VS <sup>1-2</sup>	VS <sup>1-2</sup>	SI <sup>1-2</sup>	I <sup>1-3</sup>
Internally Flawless	Very Very Slightly Included	Very Slightly Included	Slightly Included	Included

