



ELECTRONIC COPY

LG725508810
Report verification at igi.org



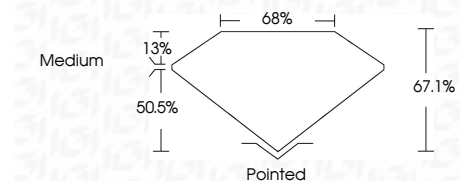
July 29, 2025
IGI Report Number LG725508810
Description LABORATORY GROWN DIAMOND

Shape and Cutting Style CUT CORNERED RECTANGULAR MODIFIED BRILLIANT

Measurements 8.36 X 5.75 X 3.86 MM

GRADING RESULTS

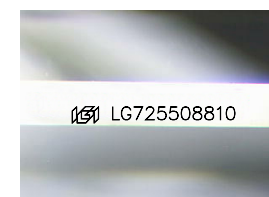
Carat Weight 1.59 CARAT
Color Grade D
Clarity Grade VVS 2



ADDITIONAL GRADING INFORMATION

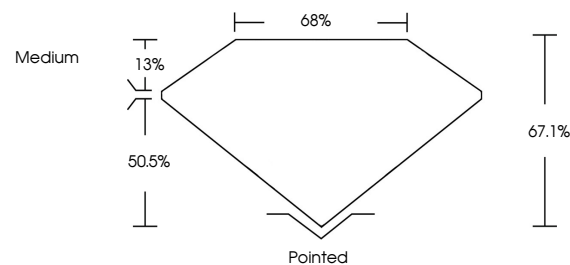
Polish EXCELLENT
Symmetry EXCELLENT
Fluorescence NONE
Inscription(s) LG725508810

Comments: This Laboratory Grown Diamond was created by Chemical Vapor Deposition (CVD) growth process. Type IIa

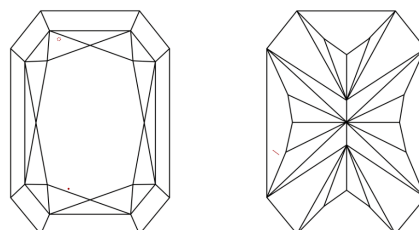


Sample Image Used

PROPORTIONS



CLARITY CHARACTERISTICS



KEY TO SYMBOLS

Red symbols indicate internal characteristics.
Green symbols indicate external characteristics.

COLOR

D E F G H I J Faint Very Light Light

CLARITY

IF WS 1-2 VS 1-2 SI 1-2 I 1-3
Internally Flawless Very Very Slightly Included Very Slightly Included Slightly Included Included

Summary of report details including report number, description, measurements, grading results, and additional information.