

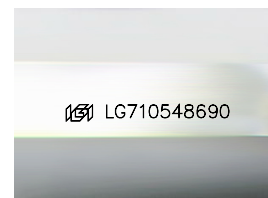
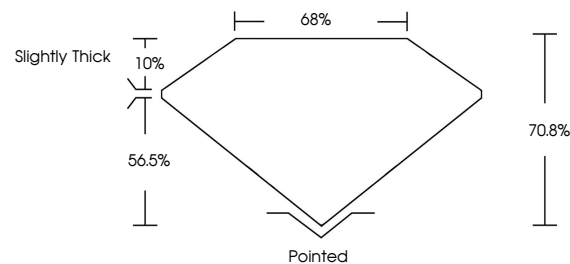


**ELECTRONIC COPY**

## LABORATORY GROWN DIAMOND REPORT

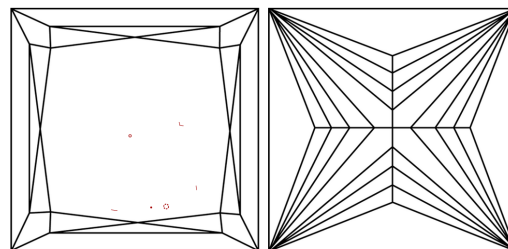
LG710548690  
Report verification at [igi.org](https://igi.org)

## PROPORTIONS



Sample Image Used

## CLARITY CHARACTERISTICS



### KEY TO SYMBOLS

Red symbols indicate internal characteristics.  
Green symbols indicate external characteristics.

## COLOR

D E F G H I J Faint Very Light Light

## CLARITY

IF      VWS<sup>1-2</sup>      VS<sup>1-2</sup>      SI<sup>1-2</sup>      I<sup>1-3</sup>

Internally Flawless	Very Very Slightly Included	Very Slightly Included	Slightly Included	Included
------------------------	--------------------------------	---------------------------	----------------------	----------

## LABORATORY GROWN DIAMOND REPORT



May 23, 2025

IGI Report Number **LG710548690**

Description **LABORATORY GROWN DIAMOND**Shape and Cutting Style **PRINCESS CUT**

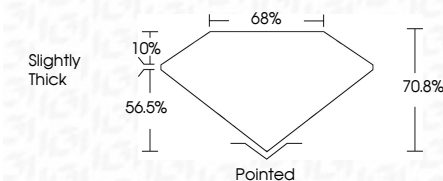
Measurements **7.91 X 7.89 X 5.59 MM**

## GRADING RESULTS

Carat Weight **3.08 CARATS**

Color Grade E

Clarity Grade VS 1



### ADDITIONAL GRADING INFORMATION

Polish EXCELLENT

Symmetry **EXCELLENT**Fluorescence **NONE**Inscription(s)  LG710548690

Comments: This Laboratory Grown Diamond was created by Chemical Vapor Deposition (CVD) growth process.  
Type IIa



**www.igi.org**

© IGI 2020, International Gemological Institute

FD - 10 20



THIS DOCUMENT WAS PRODUCED WITH THE FOLLOWING SECURITY MEASURES: SPECIAL DOCUMENT PAPER, INK SCREENS, WATERMARK, BACKGROUND DESIGNS, HOLOGRAM AND OTHER SECURITY FEATURES NOT LISTED AND DO EXCEED DOCUMENT SECURITY INDUSTRY GUIDELINES

May 23, 2025  
 LGI Report No LG710548690  
 PRINCESS CLIT

7.91 X 7.89 X 5.59 MM	Carat Weight	3.08 CARATS
	Color Grade	E
	Clarity Grade	VS 1
	Depth	70.8%
	Table	68%
	Girdle	Slightly Thick
	Culet	Pointed
	Polish	EXCELLENT
	Symmetry	EXCELLENT
	Fluorescence	NONE
	Comments(s)	See I 271054960

**Comments:**  
This Laboratory Grown Diamond was  
created by Chemical Vapor Deposition  
(CVD) growth process.