

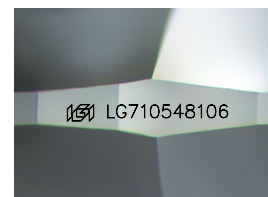
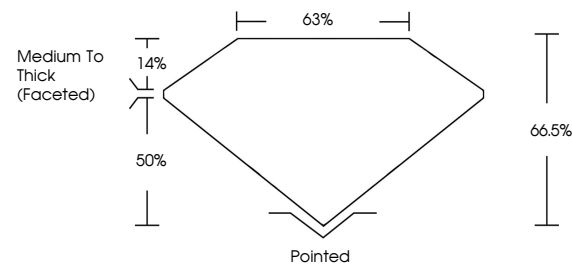


ELECTRONIC COPY

LABORATORY GROWN DIAMOND REPORT

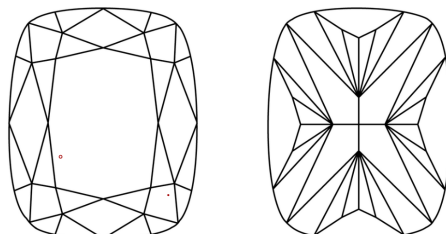
LG710548106
Report verification at igi.org

PROPORTIONS



Sample Image Used

CLARITY CHARACTERISTICS



KEY TO SYMBOLS

Red symbols indicate internal characteristics.
Green symbols indicate external characteristics.

COLOR

D E F G H I J Faint Very Light Light

CLARITY

IF VWS¹⁻² VS¹⁻² SI¹⁻² I¹⁻³

Internally Flawless	Very Very Slightly Included	Very Slightly Included	Slightly Included	Included
------------------------	--------------------------------	---------------------------	----------------------	----------

LABORATORY GROWN DIAMOND REPORT



May 22, 2025

IGI Report Number **LG710548106**

Description **LABORATORY GROWN DIAMOND**

Shape and Cutting Style **CUSHION MODIFIED
BRILLIANT**

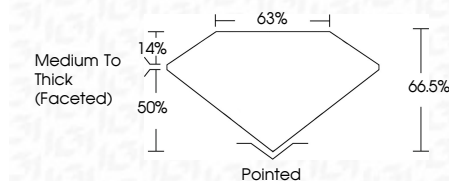
Measurements 12.19 X 8.92 X 5.93 MM

GRADING RESULTS

Carat Weight **5.10 CARATS**

Color Grade E

Clarity Grade VS 1



ADDITIONAL GRADING INFORMATION

Polish **EXCELLENT**Symmetry **EXCELLENT**Fluorescence **NONE**Inscription(s) LG710548106

Comments: This Laboratory Grown Diamond was created by Chemical Vapor Deposition (CVD) growth process.
Type IIa



© IGI 2020, International Gemological Institute

FD - 10 20



THIS DOCUMENT WAS PRODUCED WITH THE FOLLOWING SECURITY MEASURES: SPECIAL DOCUMENT PAPER, INK SCREENS, WATERMARK, BACKGROUND DESIGNS, HOLOGRAM AND OTHER SECURITY FEATURES NOT LISTED AND DO EXCEED DOCUMENT SECURITY INDUSTRY GUIDELINES

www.igi.org

May 22, 2025
GI Report No L
CUSHION MODI

12.19 X 5.92 X 5.03 MM	5.10 CARATS
Carat Weight	
Color Grade	E
Clarity Grade	VS 1
Depth	66.6%
Table	65%
Girdle	Medium to Thick (girdled)
Culet	Pointed
Polish	EXCELLENT
Symmetry	EXCELLENT
Fluorescence	NONE
Comments	see certificate

Comments:
This Laboratory Grown Diamond was created by Chemical Vapor Deposition (CVD) growth process.