

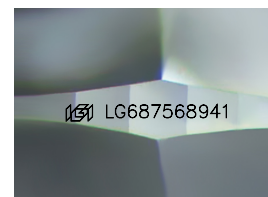
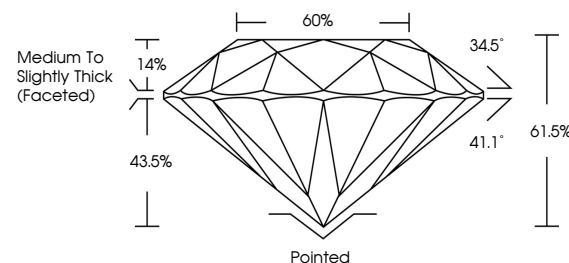


ELECTRONIC COPY

LABORATORY GROWN DIAMOND REPORT

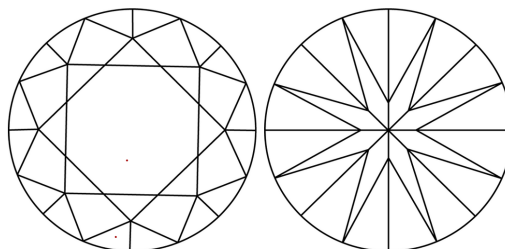
LG687568941
Report verification at igi.org

PROPORTIONS



Sample Image Used

CLARITY CHARACTERISTICS



KEY TO SYMBOLS

Red symbols indicate internal characteristics.
Green symbols indicate external characteristics.

COLOR

D E F G H I J Faint Very Light Light

CLARITY

IF WS¹⁻² VS¹⁻² SI¹⁻² |¹⁻³

Internally Flawless	Very Very Slightly Included	Very Slightly Included	Slightly Included	Included
------------------------	--------------------------------	---------------------------	----------------------	----------



March 3, 2025

IGI Report Number **LG687568941**Description **LABORATORY GROWN DIAMOND**Shape and Cutting Style **ROUND BRILLIANT**

Measurements 8.15 - 8.19 X 5.03 MM

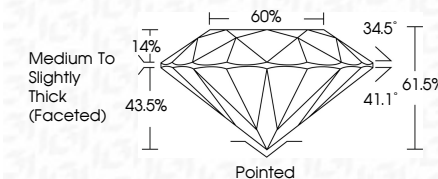
GRADING RESULTS

Carat Weight **2.08 CARATS**

Color Grade D

Clarity Grade WS 2

Cut Grade **IDEAL**



ADDITIONAL GRADING INFORMATION

Polish EXCELLENT

Symmetry **EXCELLENT**Fluorescence **NONE**Inscription(s) LG687568941

Comments: This Laboratory Grown Diamond was created by Chemical Vapor Deposition (CVD) growth process.
Type IIa



© IGI 2020, International Gemological Institute

FD - 10 20

www.igi.org



THIS DOCUMENT WAS PRODUCED WITH THE FOLLOWING SECURITY MEASURES: SPECIAL DOCUMENT PAPER, INK SCREENS, WATERMARK, BACKGROUND DESIGNS, HOLOGRAM AND OTHER SECURITY FEATURES NOT LISTED AND DO EXCEED DOCUMENT SECURITY INDUSTRY GUIDELINE

March 3, 2026	GJ Report No.GJ6756941	2.08 CARATS
ROUND BRILLIANT	15 - 8.19 X 6.03 MM	D
Color Weight	Color Grade	VVS 2
Clarity Grade	Cut Grade	IDeal
Depth	Table	61.5%
Girdle	Medium to Slightly Thick (Faceted)	60%
Culet	Poished	
Polish	Excellent	
Symmetry	Excellent	
Fluorescence	NONE	
Inscriptions(s)	IGS1G56756941	
Comments:	This Laboratory Grown Diamond was found to have no detectable evidence of CVD growth process.	
Type Iia		