



GIA NATURAL DIAMOND GRADING REPORT

September 20, 2025

GIA Report Number \*\*\*\*\*45075

Shape and Cutting Style Pear Brilliant

Measurements 10.98 x 6.51 x 3.81 mm

GRADING RESULTS

Carat Weight 1.71 carat

Color Grade D

Clarity Grade Internally Flawless

ADDITIONAL GRADING INFORMATION

Polish Excellent

Symmetry Excellent

Fluorescence None

Inscription(s): GIA \*\*\*\*\*45075

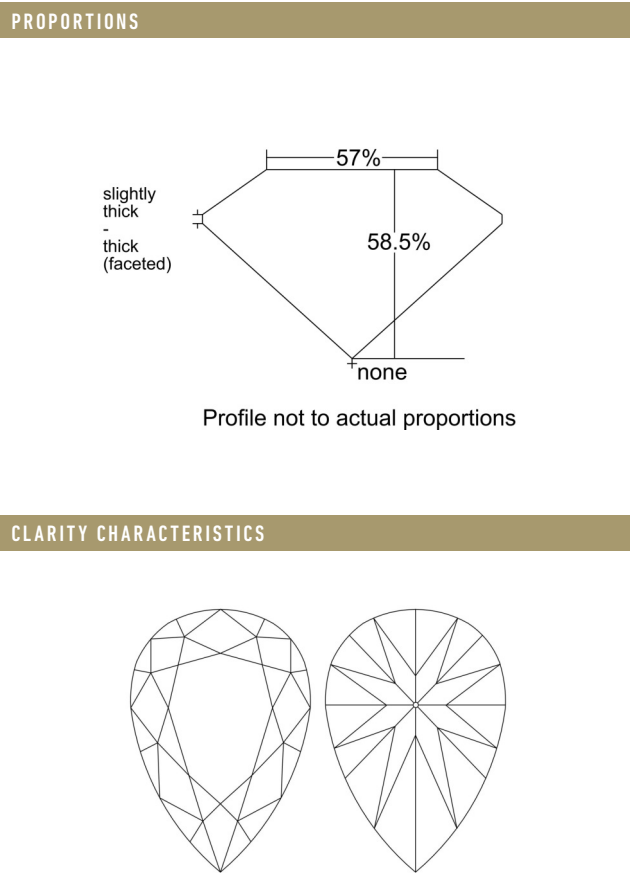
Comments: Minor details of polish are not shown.

Note: The report number is masked with \*\*\*\*\* for security.

GIA.edu

GIA REPORT  
\*\*\*\*\*45075

Verify this report at GIA.edu





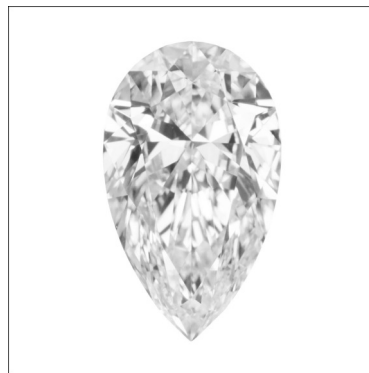
# GIA®

Gemological Institute of America, Inc.  
5355 Armada Drive  
Carlsbad, CA 92008 USA  
T +1 760 603 4500  
F +1 760 603 1814  
E [labservice@gia.edu](mailto:labservice@gia.edu)  
[GIA.edu](http://GIA.edu)

September 19, 2025

## DIAMOND TYPE CLASSIFICATION FOR GIA DIAMOND GRADING REPORT #\*\*\*\*\*45075

Scientists classify diamonds into two main "types" - type I and type II - based on the presence or absence of nitrogen which can replace carbon atoms in a diamond's atomic structure. These two diamond types can be distinguished on the basis of differences in their chemical and physical properties. Type II diamonds contain little if any nitrogen and they are subdivided into two groups (IIa and IIb) both of which are quite rare (less than 2% of all gem diamonds).



According to the records of the GIA Laboratory, the 1.71 carat Pear Brilliant diamond described in GIA Diamond Grading Report #\*\*\*\*\*45075 has been determined to be a **type IIa** diamond. Type IIa diamonds are the most chemically pure type of diamond and often have exceptional optical transparency. Type IIa diamonds were first identified as originating from India (particularly from the Golconda region) but have since been recovered in all major diamond-producing regions of the world.

Among famous gem diamonds, the 530.20 carat Cullinan I and the 105.60 carat Koh-i-noor are examples of type IIa.

The information specific to the article described in this document ("Information") is a part of the GIA Report referenced herein (the "Report") as if such Information was included in such Report. The Information was obtained using the techniques and equipment used by GIA at the time of examination. Neither the Information nor the Report is a guarantee or valuation. For additional information and important limitations and disclaimers, please see [GIA.edu/terms](http://GIA.edu/terms) or call +1 800 421 7250 or +1 760 603 4500. The limitations and disclaimers on the Report and in the client agreement with GIA governing the Report apply to the Information. By requesting GIA to provide this Information, you agree that you will not provide it to any person or entity without also providing the Report (or a copy of the Report).

©2023 Gemological Institute of America, Inc.

**FACSIMILE** This is a digital representation of the original GIA Report. This representation might not be accepted in lieu of the original GIA Report in certain circumstances. The original GIA Report includes certain security features which are not reproducible on this facsimile.