



COLORED DIAMOND
GRADING REPORT

GIA REPORT 14415181

June 27, 2005

Shape and Cutting Style **ROUND BRILLIANT**
Measurements **6.36 - 6.45 x 3.92 mm**
Weight **0.97 carat**

Proportions

Depth **61.2 %**
Table **57 %**
Girdle **EXTREMELY THIN TO MEDIUM, POLISHED**
Culet **VERY SMALL**

Finish

Polish **GOOD**
Symmetry **GOOD**

Clarity Grade **S12**

Color

Origin **NATURAL**
Grade **FANCY LIGHT**
..... **BROWNISH YELLOW**
Distribution **EVEN**
Fluorescence **FAINT**

Comments:

Additional clouds are not shown.



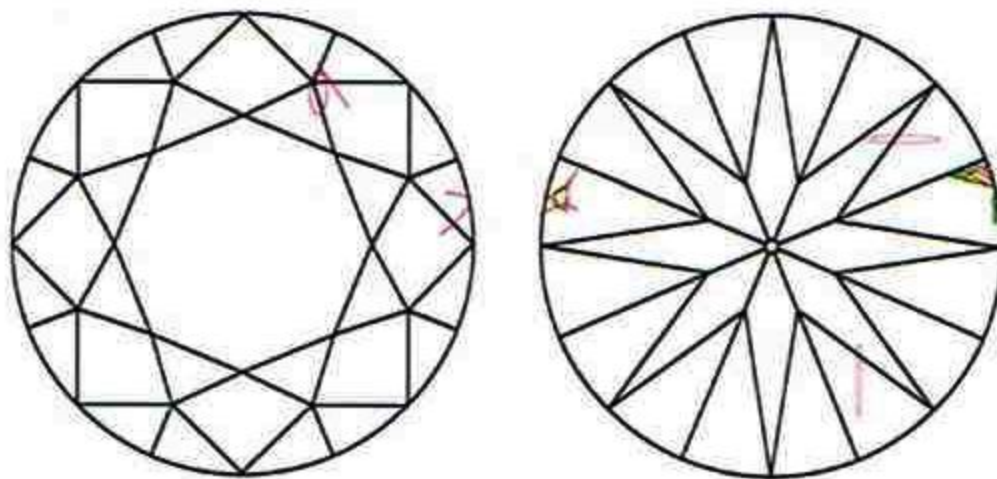
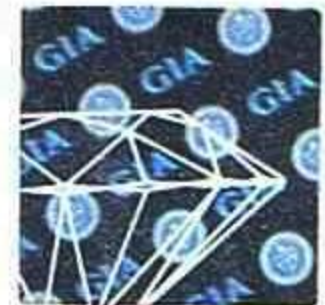
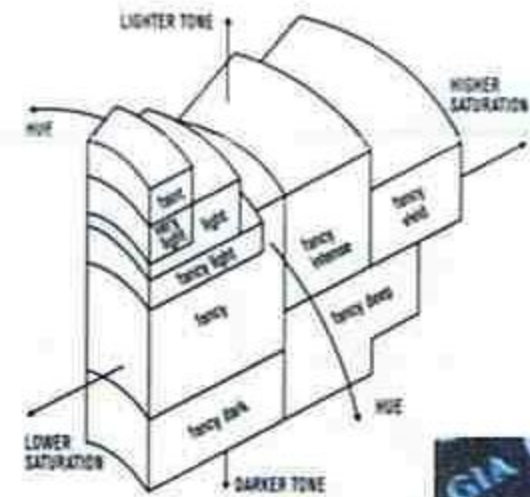
This Report is not a guarantee, valuation or appraisal. This Report contains only the characteristics of the diamond described herein after it has been graded, tested, examined and analyzed by GIA Gem Trade Laboratory under 10X magnification, and/or has been inscribed, using the techniques and equipment available to GIA Gem Trade Laboratory at the time of the examination and/or at the time of being inscribed, including fully corrected triplet loupe and binocular microscope, master color comparison diamonds, standardized viewing environment and light source, electronic carat balance, high intensity short wave fluorescence imaging system, optical measuring device, micro laser inscribing device, ProportionScope®, ultraviolet lamps, millimeter gauge, additional visual color comparators, spectroscope, Illuminator Polariscope®, immersion liquids, ultraviolet-visible and infrared spectrometers, X-ray fluorescence spectrometer, gamma-ray spectroscopy systems, beta radiation scintillation detector, radiation survey meter, X-ray luminescence equipment, and ancillary instruments as necessary. Red symbols denote internal characteristics (inclusions). Green or black symbols denote external characteristics (blemishes). Diagram is an approximate representation of the diamond, and symbols shown indicate type, position, and approximate size of clarity characteristics. All clarity characteristics may not be shown. Details of finish are not shown. The recipient of this Report may wish to consult a credentialed Jeweler or Gemologist about the importance and interrelationship of cut, color, clarity and carat weight.

GIA
CLARITY SCALE

- FLAWLESS
- INTERNALLY FLAWLESS
- VVS₁ VERY VERY SLIGHTLY INCLUDED
- VVS₂ VERY VERY SLIGHTLY INCLUDED
- VS₁ VERY SLIGHTLY INCLUDED
- VS₂ VERY SLIGHTLY INCLUDED
- S1₁ SLIGHTLY INCLUDED I
- S1₂ SLIGHTLY INCLUDED I
- I₁ INCLUDED
- I₂ INCLUDED
- I₃ INCLUDED

GIA
COLORED DIAMOND SCALE

Illustration of GIA fancy color grade interrelationships



KEY TO SYMBOLS

- Crystal
- Cloud
- ~ Feather
- ^ Indented Natural
- ⊖ Cavity

IMPORTANT DOCUMENT, STORE SAFELY

The security features in this document, including the hologram, security screen, watermark lines and chemical abrasivity, in addition to those not listed, exceed document security industry guidelines.

NOTICE: IMPORTANT LIMITATIONS ON BACK